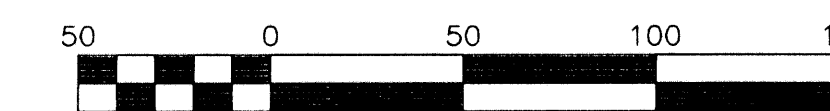
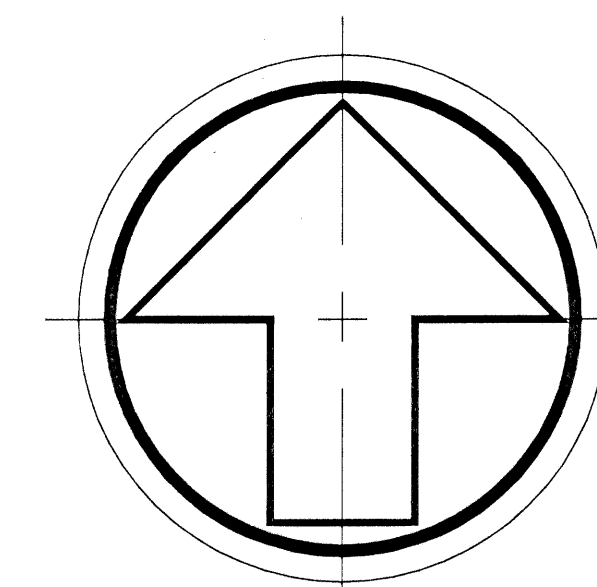


**SDA SHAH & ASSOCIATES** ENGINEERING SURVEYING PLANNING  
**DROTOS**  
CERTIFICATE OF AUTHORIZATION NO. LB6456  
1885 W. Commercial Blvd. • Suite 190 • Ft. Lauderdale, FL 33309  
PH: 954-776-7604 • FAX: 954-776-7608  
JUNE 1999

# PALMA VISTA

A PORTION OF THE PONTE VERDE P.U.D.

A REPLAT OF LOTS 21 THROUGH 50, TRACT "B", THE PEDESTRIAN TRACT, AND A PORTION OF THE LANDSCAPE BUFFER TRACTS, PONTE VERDE, ACCORDING TO THE PLAT THEREOF RECORDED IN PLAT BOOK 84, PAGES 83 THROUGH 88 OF THE PUBLIC RECORDS OF PALM BEACH COUNTY, FLORIDA. TOGETHER WITH A REPLAT OF TRACT 12, LESS THE NORTH 30 FEET, BLOCK 78, PALM BEACH FARMS CO. PLAT NO. 3, ACCORDING TO THE PLAT THEREOF RECORDED IN PLAT BOOK 2, PAGES 45 THROUGH 54 OF THE PUBLIC RECORDS OF PALM BEACH COUNTY, FLORIDA, LYING IN SECTION 19, TOWNSHIP 47 SOUTH, RANGE 42 EAST, PALM BEACH COUNTY FLORIDA.



SCALE 1" = 50'

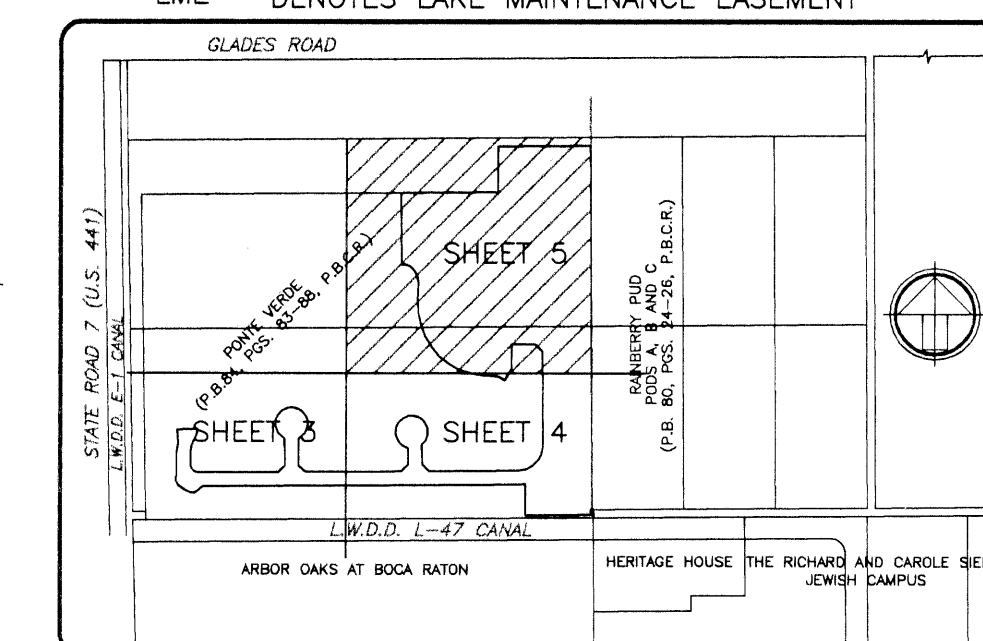
STATE OF FLORIDA  
COUNTY OF PALM BEACH  
This Plat was filed for record at \_\_\_\_\_ M., this \_\_\_\_\_ day of \_\_\_\_\_, 200\_\_ and duly recorded in Plat Book No. \_\_\_\_\_ on Pages \_\_\_\_\_ and \_\_\_\_\_.  
DOROTHY H. WILKEN, CLERK  
BY: \_\_\_\_\_ DC

### SURVEY NOTES:

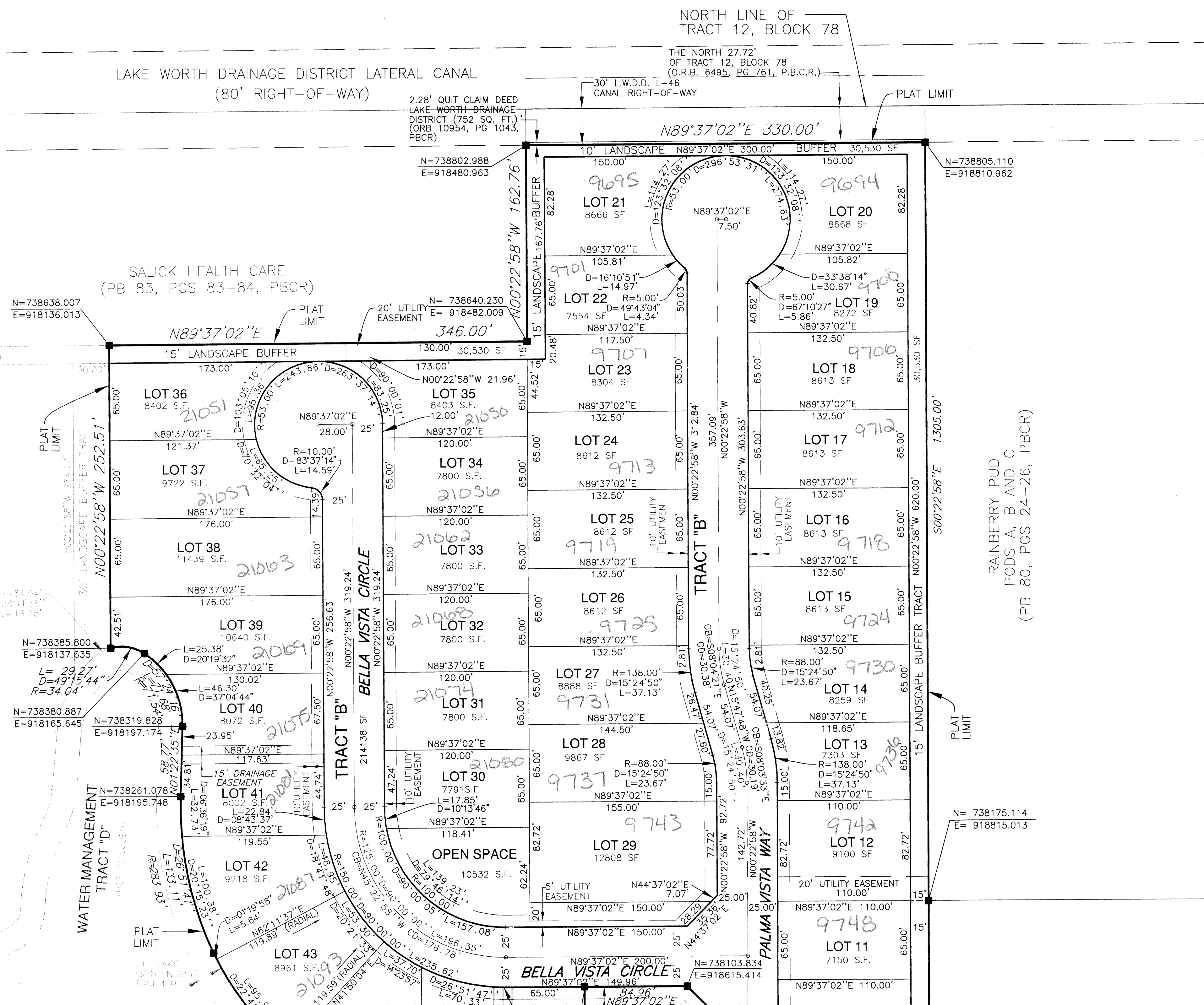
- COORDINATES SHOWN HEREON ARE GRID DATUM AND ARE BASED ON THE NORTH AMERICAN DATUM OF 1983, 1990 ADJUSTMENT, FLORIDA EAST ZONE. COORDINATE SYSTEM IS 1983 STATE PLANE TRANSVERSE MERCATOR PROJECTION.
- LINEAR UNIT = US SURVEY FOOT
- SCALE FACTOR = 1.00001933 ALL DISTANCES ARE GROUND. GROUND DISTANCE x SCALE FACTOR = GRID DISTANCE.
- BEARINGS SHOWN HEREON ARE BASED ON THE WEST LINE OF PARCEL "A", ARBOR OAKS AT BOCA RATON, RECORDED IN PLAT BOOK 72, PAGES 93-95, PALM BEACH COUNTY RECORDS. SAID LINE BEARS NORTH 00°53'32" WEST. ROTATE PLAT BEARINGS CLOCKWISE 00°00'52" FOR GRID BEARINGS.
- NOTICE: THIS PLAT, AS RECORDED IN ITS GRAPHIC FORM, IS THE OFFICIAL DEPICTION OF THE SUBDIVIDED LANDS DESCRIBED HEREIN AND WILL IN NO CIRCUMSTANCES BE SUPPLANTED IN AUTHORITY BY ANY OTHER GRAPHICAL OR DIGITAL FORM OF THE PLAT. THERE MAY BE ADDITIONAL RESTRICTIONS THAT ARE NOT RECORDED ON THIS PLAT THAT MAY BE FOUND IN THE PUBLIC RECORDS OF THIS COUNTY.
- NO BUILDINGS OR ANY KIND OF CONSTRUCTION OR TREES OR SHRUBS SHALL BE PLACED ON ANY EASEMENT WITHOUT PRIOR WRITTEN CONSENT OF ALL EASEMENT BENEFICIARIES AND ALL APPLICABLE COUNTY APPROVALS OR PERMITS AS REQUIRED FOR SUCH ENCROACHMENTS.
- IN INSTANCES WHERE DRAINAGE AND UTILITY EASEMENTS INTERSECT, THOSE AREAS OF INTERSECTION ARE DRAINAGE AND UTILITY EASEMENTS. CONSTRUCTION, OPERATION AND MAINTENANCE OF UTILITIES WITHIN THESE AREAS OF INTERSECTION SHALL NOT INTERFERE WITH THE CONSTRUCTION, OPERATION AND MAINTENANCE OF DRAINAGE FACILITIES.
- INES INTERSECTING ARCS ARE NON-RADIAL UNLESS OTHERWISE NOTED.
- THE UNDERLYING UTILITY EASEMENTS, DRAINAGE EASEMENTS AND ACCESS TRACT "B" CREATED BY THE PLAT OF PONTE VERDE, ACCORDING TO THE PLAT THEREOF, RECORDED IN PLAT BOOK 84, PAGES 83 THROUGH 88 OF THE PUBLIC RECORDS OF PALM BEACH COUNTY, FLORIDA AND LYING WITHIN THE BOUNDARIES OF THIS REPLAT WERE ABANDONED PER RESOLUTION BY THE PALM BEACH COUNTY BOARD OF COUNTY COMMISSIONERS AND RECORDED IN OFFICIAL RECORDS BOOK 12069, PAGES 356-375 OF SAID PUBLIC RECORDS.

### LEGEND:

- D.E. - DENOTES DRAINAGE EASEMENT
- - DENOTES PERMANENT REFERENCE MONUMENT (PRM) NO. 3998, UNLESS OTHERWISE NOTED.
- P.B. - DENOTES PLAT BOOK
- ORB - DENOTES OFFICIAL RECORDS BOOK
- POB - DENOTES POINT OF BEGINNING
- POC - DENOTES POINT OF COMMENCEMENT
- - DENOTES CENTERLINE
- U.E. - DENOTES UTILITY EASEMENT
- R/W - DENOTES RIGHT-OF-WAY
- - DENOTES PALM BEACH COUNTY RECORDS
- PBCR - DENOTES PERMANENT CONTROL POINT (P.C.P.)
- ∠ - DENOTES CENTRAL ANGLE
- R - DENOTES RADIUS
- L - DENOTES ARC LENGTH
- CB - DENOTES CHORD BEARING
- CD - DENOTES CHORD DISTANCE
- LME - DENOTES LAKE MAINTENANCE EASEMENT



INDEX MAP  
N.T.S.



MATCHLINE - SEE SHEET 4 OF 5 SHEETS

SDA SHAH & ASSOCIATES  
PAGE 36  
FLOOD MAP # 2306  
ZONING PLD  
QUAD # 54  
ZIP CODE 33418  
SE  
TAZ 882  
PUD NAME Ponte Verde